

# NATURA

ON FOREST'S EDGE

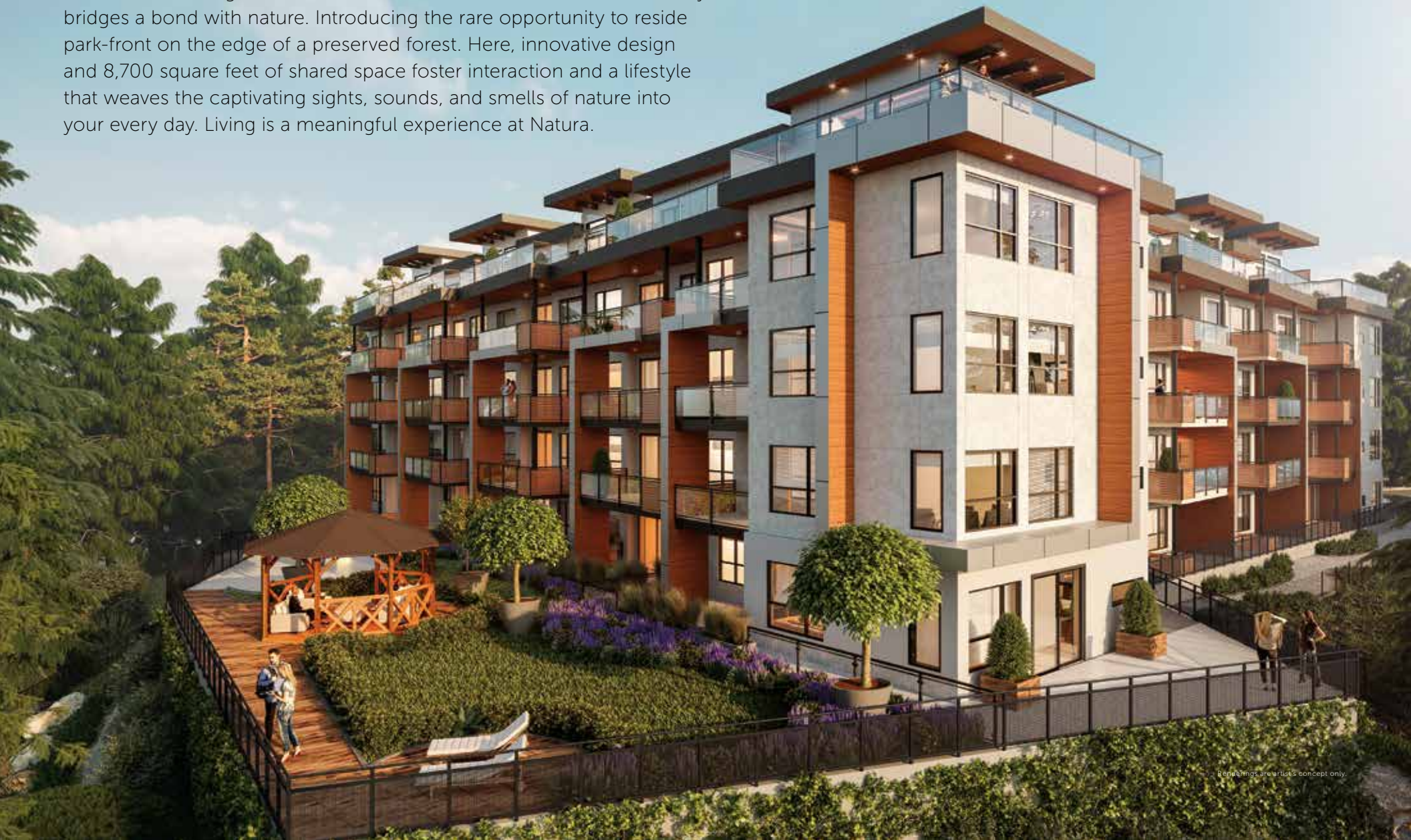


# BRIDGING A BOND BETWEEN NATURE AND URBAN

## *A rare way to live*



Located on the edge of Abbotsford's Horn Creek Park, a new community bridges a bond with nature. Introducing the rare opportunity to reside park-front on the edge of a preserved forest. Here, innovative design and 8,700 square feet of shared space foster interaction and a lifestyle that weaves the captivating sights, sounds, and smells of nature into your every day. Living is a meaningful experience at Natura.



A SANCTUARY  
IN THE TREES





Renderings are artist's concept only.

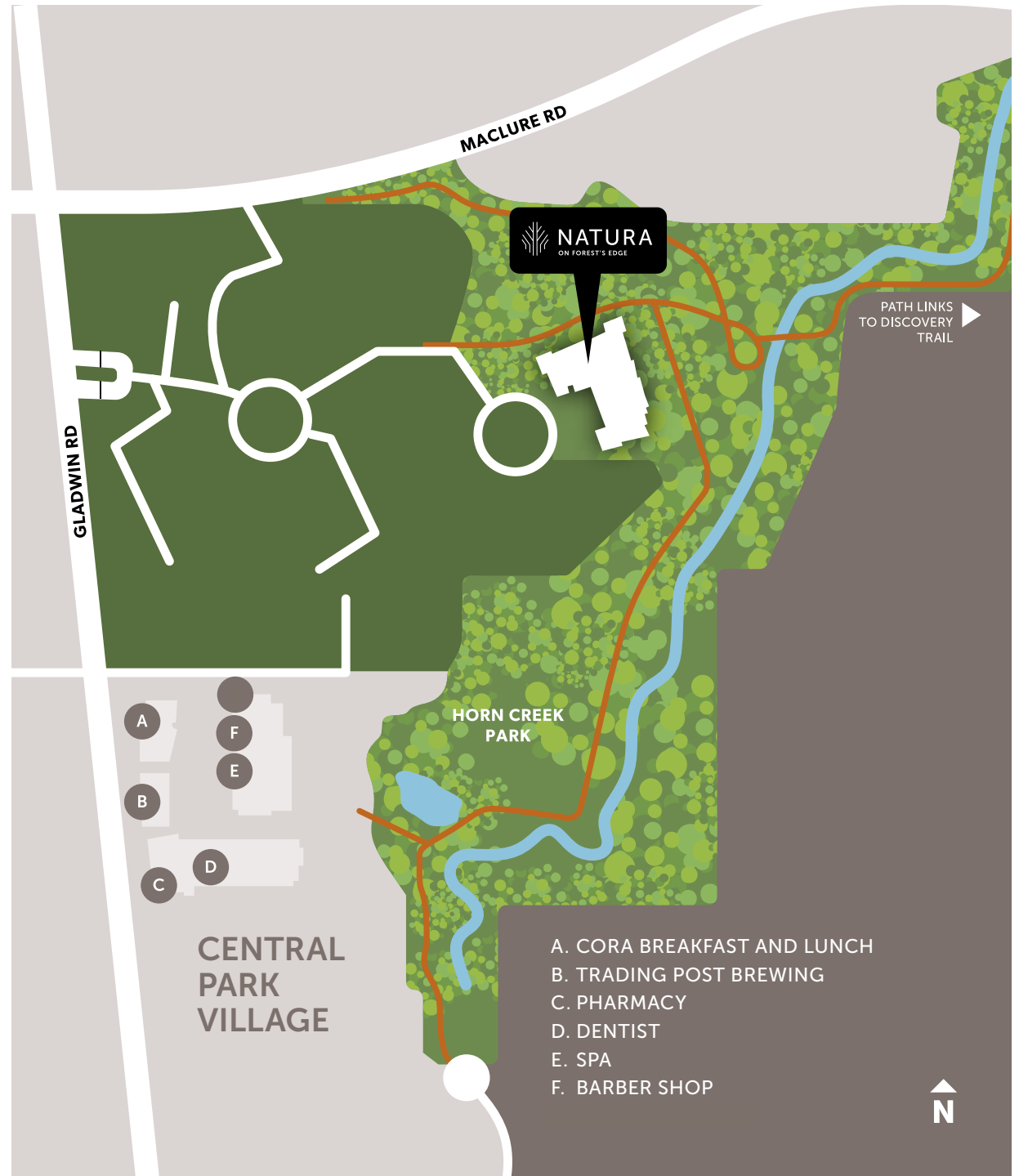


If you've ever dreamed of living on the forest's edge

The sweet scent of the forest floor after a rainfall. The sound of a breeze combing through the treetops. The forest canopy so close to home it feels like you could touch it. The unique chance to live beside a preserved natural forest. This is Natura. Horn Creek Park, a forest within a residential neighbourhood, is a hidden green space that connects with Abbotsford's 28-kilometre Discovery Trail.

Living within the gated community of Regency Park, and with the forest so close, it feels like you are living far away from it all. Your neighbourhood is peaceful, a beautifully landscaped place where safety and quiet abound.

Just beyond the gates, a wealth of urban convenience is at your doorstep. Natura is located only steps from the shops, eateries, and conveniences of the new Central Park Village – a quick walk through the neighbourhood or the park to pick up groceries from the market or have a drink with friends at the brew pub.

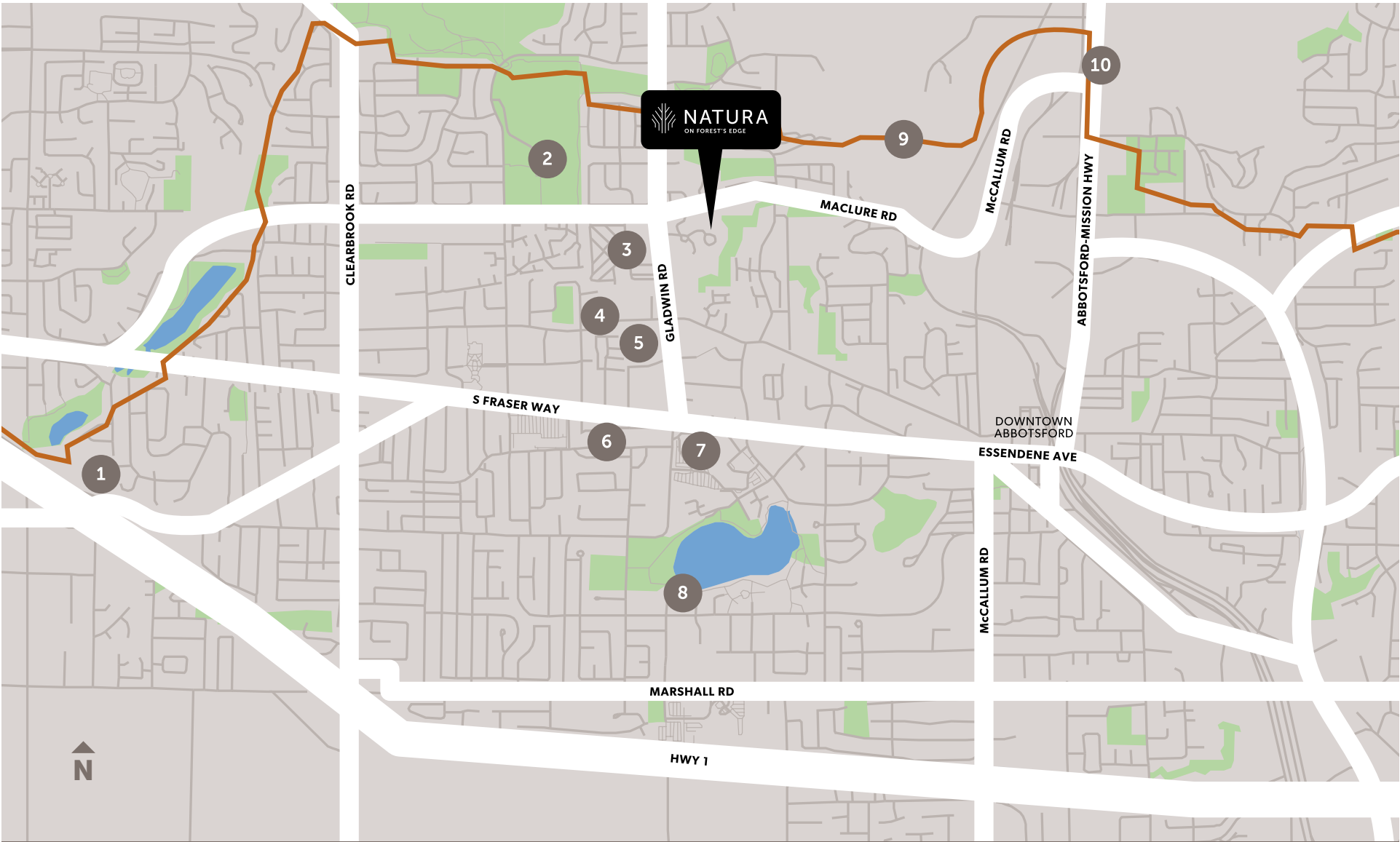


# NATURA'S LOCATION TRULY HAS IT ALL

A major city lies  
on the other side  
of your gated haven

**A**bbotsford, a vibrant Fraser Valley centre, offers everything you would expect in a major city – because it is one. Shop brand names at Sevenoaks and Highstreet Shopping Centres or stroll the picturesque streets of historic downtown, each are a 5-minute drive away. Excellent post-secondary education is available at the University of the Fraser Valley, which offers over 100 programs. When the desire to explore arises, catch a flight at Abbotsford International Airport. Abbotsford is poised to continue growing on a path that's designed for people just like you.





## IN YOUR BACKYARD

- 1. HIGHSTREET
- 2. ABBOTSFORD EXHIBITION PARK
- 3. ABBOTSFORD PENTECOSTAL ASSEMBLY
- 4. REAL CANADIAN SUPERSTORE
- 5. MOXIES
- 6. WEST OAKS MALL
- 7. SEVENOAKS SHOPPING CENTRE
- 8. MILL LAKE
- 9. DISCOVERY TRAIL
- 10. LEPP FARM MARKET

## Design that is attentive to function, style, and the future

In tandem with Naturbana's philosophy, urban design connects with nature to offer a more meaningful home ownership opportunity. Natura is designed to comply with high energy efficient standards, including heat recovery ventilation (HRV) and ductless split system air conditioning. Sustainability and future proofing are key, with solar- and carbon neutral-ready features in place, including Electric Vehicle charging stations.

### SKY TERRACE – LEVEL 5



## A THOUGHTFUL VISION FOR TOMORROW





BELONG TO A  
CONNECTED COMMUNITY



PARK TERRACE – LEVEL 1

Renderings are artist's concept only.

**A**t Natura a meaningful connection to neighbours and the community is made possible with innovative amenity spaces designed to host social and work interaction. It all begins in the lobby, where large windows frame the forest.



**PARK LOUNGE – LEVEL 1**

Renderings are artist's concept only



**SKY LOUNGE – LEVEL 5**

Renderings are artist's concept only

INTERIORS ECHO THE  
HARMONY OF THE FOREST





## Your Tranquil Cocoon

**K**itchens strike a chord with nature, with organic and contemporary lines forming the framework. Take comfort knowing measures are taken throughout to lessen your footprint on the earth.

## VERSATILITY AND HEALTH ARE PRIORITIZED



Open-plan, functional spaces are in sync with how you live your life and are designed to evolve with your changing needs. When it's time to unwind, open your windows or step onto your balcony and breathe in the forest's healing essence. Live in a home that uplifts your spirit.



# COLLABORATION TO MAKE A DIFFERENCE AT HOME AND FOR THE PLANET



**NATURBANA PROPERTIES** Inspired by Vancouver's commitment to become "The Greenest City in the World" by 2020, Naturbana is driven by innovation, holistic design, and a collaborative approach to create sustainable communities where people live in harmony with our natural surroundings to elicit happiness and wellbeing. Natura's location adjacent the forest of Horn Creek Park is ideal for fulfilling this vision.



**KERKHOFF CONSTRUCTION** For 50 years, Kerkhoff Construction has been a well-respected industry leader in construction and development, and partners on elevated projects across British Columbia. They are leaders in real estate development, construction, and project management, both locally and internationally. A commitment to excellence, innovation, and integrity has maintained their reputation for quality. By teaming up with like-minded groups, Kerkhoff is changing skylines and communities for the better.



**PORTICO DESIGN GROUP** The Vancouver-based design firm brings residential and commercial spaces to life with a forward-thinking sense of creativity and expertise.



**CHP ARCHITECTS** Working with the intention of creating the unique, CHP Architects designs structures and landscaping that embrace sustainability and functionality.



Through the "Natura Gives Back Program", Naturbana will donate \$500 per home sold to nature stewardship charities, both locally and globally.



# NATURA

ON FOREST'S EDGE

[liveatnatura.com](http://liveatnatura.com)



This is not an offering for sale. Any such an offering can only be made with a disclosure statement. The Developer reserves the right to make modifications to floor plans, features and/or finishes without notice. Sizes are based on architectural measurements E.&O.E.