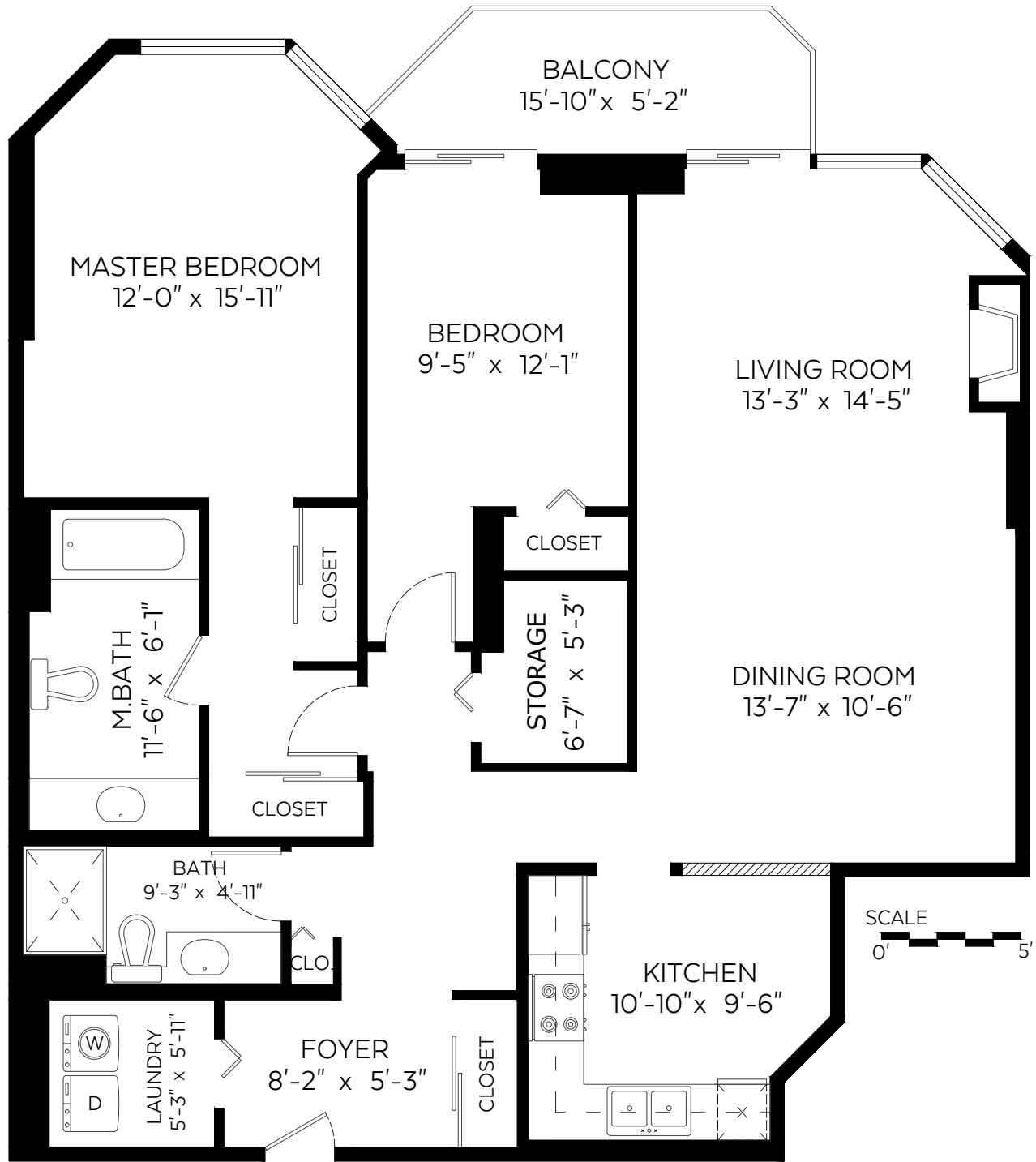


#802-1245 Quayside Drive,  
New Westminster, B.C.

Main Floor: 1,281 sq.ft.

Auxiliary Area

Balcony: 72 sq.ft.



Measured on: September 22, 2020

The floor plan is not suitable for architectural/construction and is covered under E&O. © Excelsior Measuring Inc. 2020. All rights reserved for Excelsior Measuring Inc. Users shall not publish and distribute such material (in whole or in part) and/or incorporate it in other works in any form.